

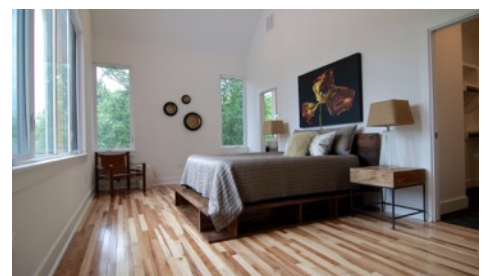
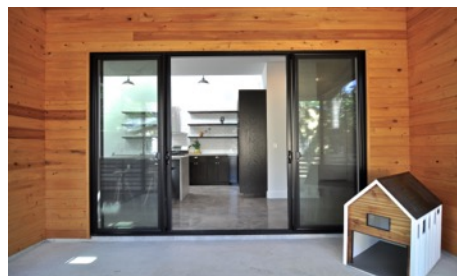
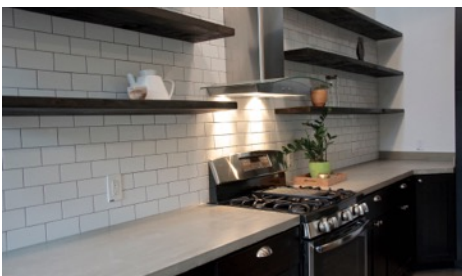
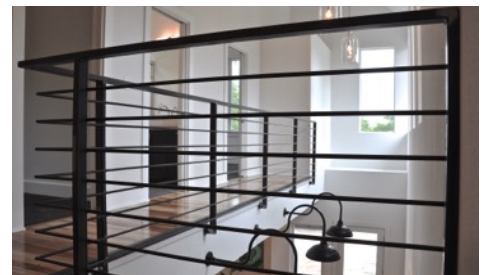
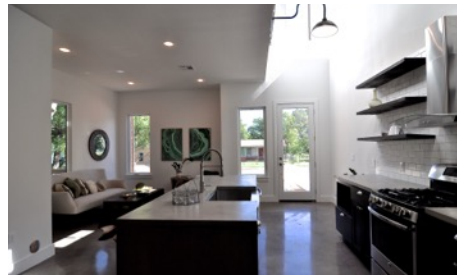
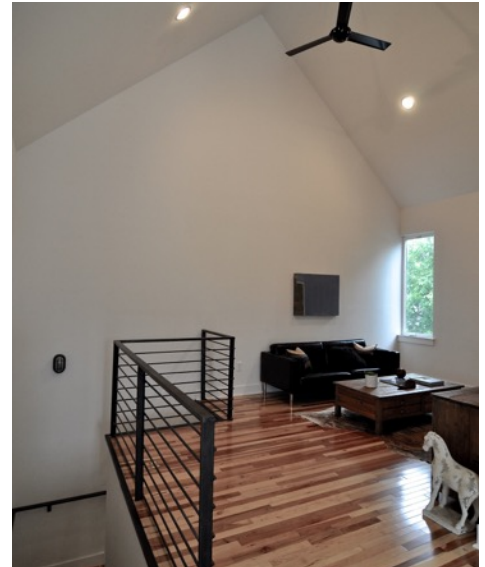
For Sale

1902 E 14th Street, Unit B

“Swedish Barn Style” Homes - 78702
1884 SF [builder] • 3 bed / 2.5 bath
MLS #: 6161949

Skout^x

Roland Galang
Broker | CNE, LEED AP
512 791.1584
Roland@SkoutAustin.com



1902 E 14th is a pair of stunning “Swedish Barn Style” homes in East Austin. Developed by ATX Investments, designed by Architect AJ Smith (Forsite Studio) & built by Deville Custom Homes. Separate access, for front-A (from E 14th St.) and back-B (alley entrance) units, offers privacy. With a convenient urban core location, 1902 E 14th Street is ~0.7 mile to I-35; ~0.8 miles to MLK MetroRail Station; ~1.2 miles to UT Austin; ~1.6 miles to State Capitol; and ~7 miles to airport. Easy access to popular eastside dining & entertainment spots.

Quick Facts

- Soaring ceiling heights w/ second living area upstairs
- Open modern kitchen - custom black stained oak cabinets, concrete countertops, stainless steel appliances
- Polished concrete floors [downstairs]
- Solid Bellawood Hickory floors (3/4”) & carpet [upstairs]
- Black custom steel interior staircase+railing
- Black custom steel screened-in porch
- Matching dog house
- Two-car garage w/ steel garage doors

All information contained herein is deemed reliable but not guaranteed. Buyer must verify.

